

PLANKS & TABLETOPS

WOOD FLOORING, CLADDING & PANELING

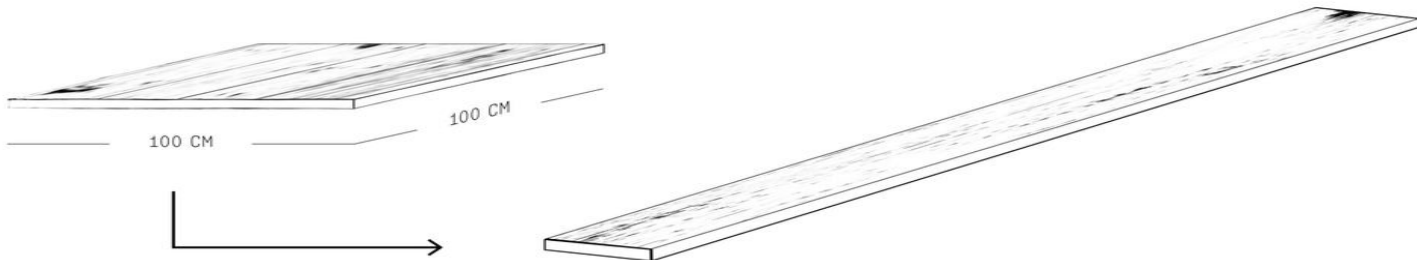
prices include costs of brushing and planing
prices are incl. vat

Our terms of service
applies to all offers and quotes
www.frankpouwer.nl



Frank Pouwer
HISTORISCHE BOUWMATERIALEN

CALCULATION EXAMPLE OF ONE PLANK



The following calculation example illustrates how to calculate the price of one plank:

- Step 1** Look up the right dimensions of the plank and the corresponding price in the pricelist.
Example: French Oak Planks are at € 78,- per m²
- Step 2** Choose the dimensions of the plank you need.
Example: In this example we choose a plank of 18x220 cm and with a width of approx.
- Step 3** First calculate the size in square meters of the plank of 18x220 cm:
Example: 0,18 meter x 2,20 meter = 0,396 m²
- Step 4** Then calculate the price of the plank:.
Example: 0,396 m² x € 78,- per m² = € 30,88 per plank

Attention! The example is based on net plank costs.
Planks on our yard are sold based on length, if in stock.
Prices are incl. VAT



Frank Pouwer
HISTORISCHE BOUWMATERIALEN

TABLE OF CONTENTS

PLANKS & TABLETOPS

| | | |
|-----------------------------------|-----------|----|
| RECLAIMED OAK WAGON PLANKS | CROSSCUTS | 5 |
| FRENCH OAK PLANKS | PLANED | 5 |
| BOURGOGNE OAK PLANKS | BRUSHED | 6 |
| PARISIENNE OAK PLANKS | BRUSHED | 6 |
| REIMS OAK PLANKS | BRUSHED | 7 |
| RECLAIMED HARDWOOD WAGON PLANKS | BRUSHED | 7 |
| RECLAIMED OAK RAILWAY SLEEPERS | PLANED | 8 |
| RECLAIMED OAK BARNWOOD | PLANED | 8 |
| RECLAIMED OAK BARNWOOD | BRUSHED | 9 |
| RECLAIMED OAK WAGON PLANKS | PLANED | 9 |
| RECLAIMED OAK WAGON PLANKS | BRUSHED | 10 |
| OAK WOOD SLABS AIR DRIED | BRUSHED | 10 |
| RECLAIMED HARDWOOD WAGON PLANKS | BRUSHED | 11 |
| RECLAIMED PINE WAGON PLANKS | BRUSHED | 11 |
| RECLAIMED OAK WINE PRESS PLANKS | | 12 |
| RECLAIMED OAK WAGON PLANKS | BRUSHED | 12 |
| OAK WOOD SLABS AIR DRIED | PLANED | 13 |
| RECLAIMED PLANKS oak and hardwood | BRUSHED | 13 |



TABLE OF CONTENTS

WOOD FLOORING, CLADDING & PANELING

| | |
|---|----|
| BOURGOGNE OAK BOARDS BRUSHED | 16 |
| BOURGOGNE OAK BOARDS BRUSHED | 16 |
| PARISIENNE OAK BOARDS BRUSHED | 17 |
| REIMS OAK BOARDS BRUSHED | 17 |
| FRENCH OAK BOARDS PLANED/FLOORING | 18 |
| RECLAIMED OAK WAGON BOARDS BRUSHED | 18 |
| RECLAIMED OAK WAGON BOARDS BRUSHED | 19 |
| RECLAIMED OAK WAGON BOARDS PLANED | 19 |
| RECLAIMED PINE WAGON BOARDS BRUSHED | 20 |
| RECLAIMED PINE WAGON BOARDS BRUSHED | 20 |
| RECLAIMED HARDWOOD WAGON BOARDS BRUSHED | 21 |
| RECLAIMED HARDWOOD WAGON BOARDS BRUSHED | 21 |
| RECLAIMED LARCH FLOORING | 22 |
| RECLAIMED PINE CEILING PANELING | 22 |
| RECLAIMED PINE BARNWOOD CLADDING | 23 |
| RECLAIMED PINE BOARDS | 23 |
| RECLAIMED PINE BOARDS PLANED | 24 |
| RECLAIMED PINE BARNWOOD CLADDING | 24 |
| PINE CLADDING BOARDS PACKAGE PURCHASE | 25 |
| RECLAIMED OREGON PINE FLOORING PLANED | 25 |



RECLAIMED OAK RAILWAY SLEEPERS PLANED

€ 145,- m2

CUT FROM SLEEPER

thickness approx. 4 cm

> 280 cm in length: + € 50 per m2

plank calculation example

18x220 cm

$0,18 \times 2,20 \times € 145 = € 57$



RECLAIMED PLANKS oak and hardwoodBRUSHED

€ 125,- m2

thickness approx. 6 cm, widths approx. 12 - 22 cm

lengths approx. 150 - 180 cm

calculation example plank 18x150cm

$0,15 \times 1,5 \times € 125 = € 34$



Prices are incl. VAT



Frank Pouwer
HISTORISCHE BOUWMATERIALEN

RECLAIMED OAK WAGON PLANKS CROSSCUTS

€ 35,- m1

thickness approx. 4 cm

length approx. 100 cm

≥ 19 cm wide + € 10 per running meter

plank calculation example

18x100 cm, thickness 4 cm

1,00x€ 35 = € 35



FRENCH OAK PLANKS PLANED

€ 225,- m2

thickness approx. 4 cm

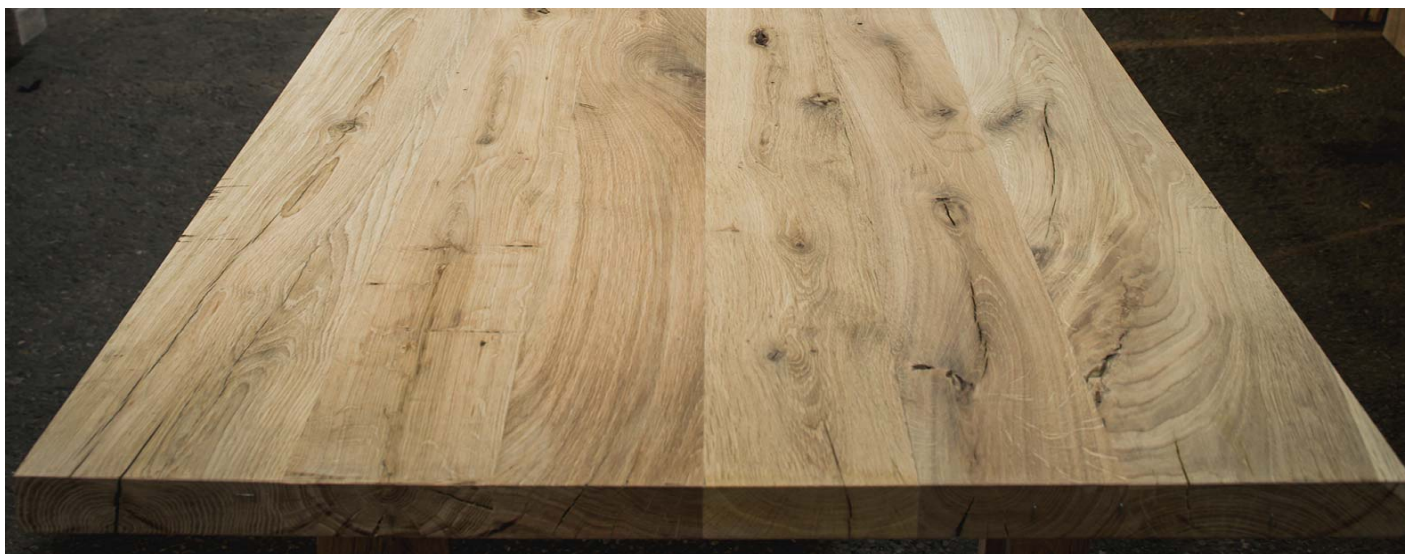
≥ 23 cm wide: + € 45 per m2

2/6 cm thickness also available

plank calculation example

18x220 cm, 4 cm thickness

0,18x2,20x€ 200 = € 79



Prices are incl. VAT



Frank Pouwer
HISTORISCHE BOUWMATERIALEN

RECLAIMED OAK BARNWOOD PLANED

€ 275,- m2

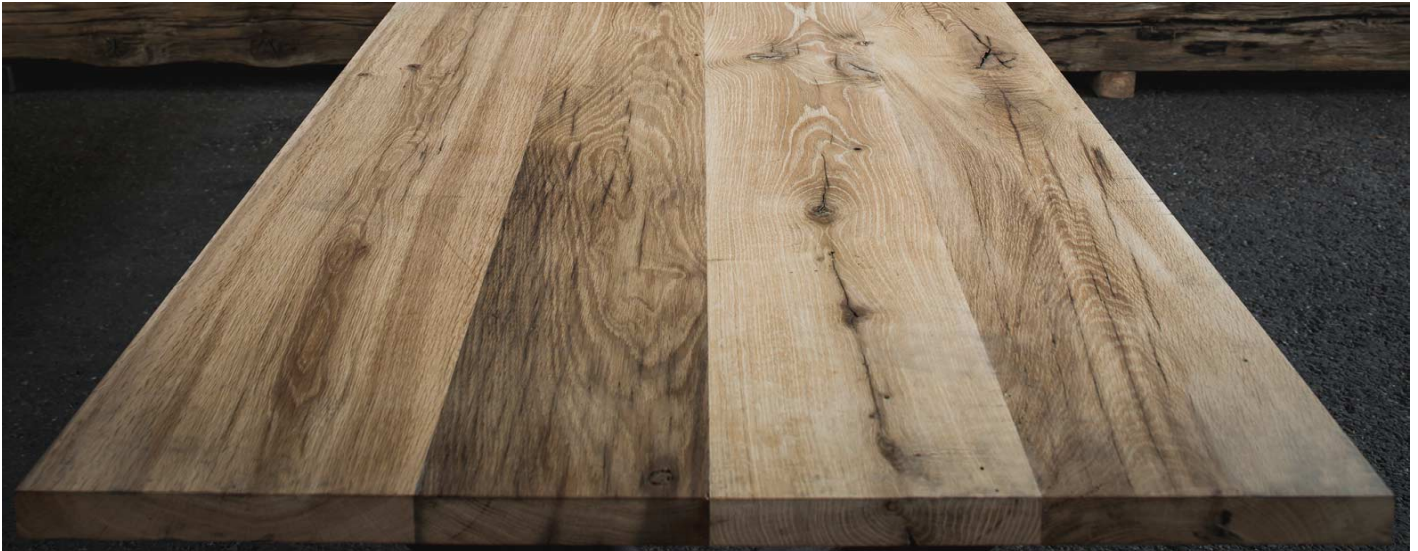
thickness approx. 4 cm

thicknesses 3/5/6 cm available as well

plank calculation example

18x220 cm, thickness 4 cm

$0,18 \times 2,20 \times € 225 = € 89$



RECLAIMED OAK WAGON PLANKS BRUSHED

€ 190,- m2

SQUARE EDGE

thickness approx. 4 cm

> 18 cm wide + € 60,- per m2

2/3/6 cm thicknesses are also available

calculation example plank

18x220 cm

$0,18 \times 2,20 \times € 260 = € 75$



**BON
PRIX**

Prices are incl.



Frank Pouwer
HISTORISCHE BOUWMATERIALEN

RECLAIMED OAK WAGON PLANKS PLANED

€ 235,- m2

SQUARE EDGE thickness approx. 3,5 cm

≥ 19 cm wide: + € 60 per m2

thicknesses 3/4/6 cm also available

plank calculation example

18x220 cm, 3,5 cm thickness

0,18x2,20x€ 235 = € 93



OAK WOOD SLABS AIR DRIED BRUSHED

€ 190,- m2

thickness approx. 4 cm

price on demand for widths > 45 cm

thicknesses 2/3/6/8 cm also available

plank calculation example

18x220 cm, thickness 4 cm

0,18x2,20x€ 190 = € 75



OAK WOOD SLABS AIR DRIED PLANED

€ 235,- m2

thickness approx. 3,5 cm

price on demand for widths ≥ 45 cm

thicknesses 2/3/6/8 cm also available

plank calculation example

18x220 cm, thickness 3,5 cm

$0,18 \times 2,20 \times € 235 = € 93$



REIMS OAK PLANKS BRUSHED

€ 125,- m2

thickness approx. 2,5 cm

thicknesses 1,5/4/6/8 cm also available

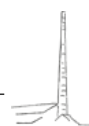
plank calculation example

18x220 cm, thickness 2,5 cm

$0,18 \times 2,20 \times € 125 = € 50$



Prices are incl. VAT



Frank Pouwer
HISTORISCHE BOUWMATERIALEN

RECLAIMED OAK BARNWOOD BRUSHED

€ 150,- m2

thickness approx. 2,5 cm
≥200 cm long + € 40 per m2

plank calculation example
18x220 cm
 $0,18 \times 2,20 \times € 190 = € 75$



RECLAIMED HARDWOOD WAGON PLANKS BRUSHED

€ 195,- m2

SQUARE EDGE
thickness approx. 4 cm

plank calculation example
18x220 cm
 $0,18 \times 2,20 \times € 195 = € 77$



Prices are incl. VAT



RECLAIMED HARDWOOD WAGON PLANKS BRUSHED € 175,- m2

REBATED

thickness approx. 4,5 cm

plank calculation example

18x220 cm,

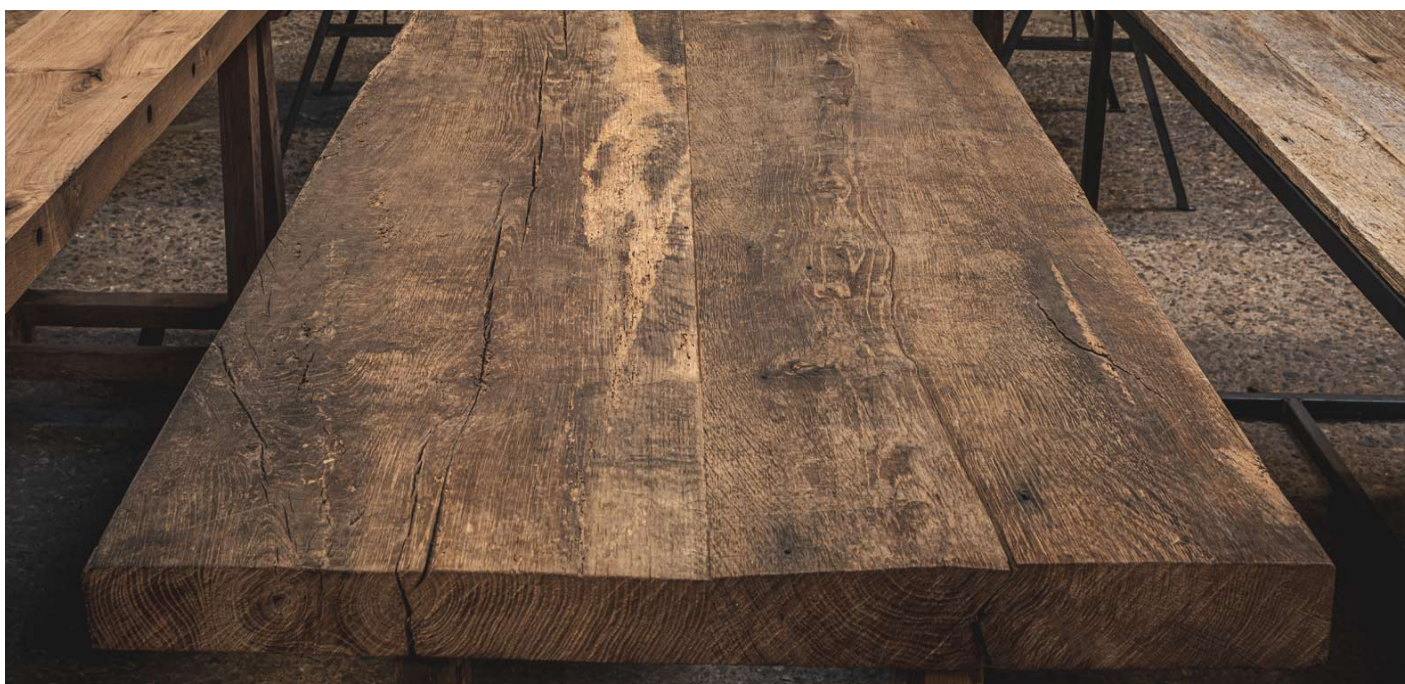
0,18x2,20x€ 150 = € 59



RECLAIMED OAK WINE PRESS PLANKS

thickness approx. 4/6/8 cm

prices and stock availability on demand



Prices are incl. VAT



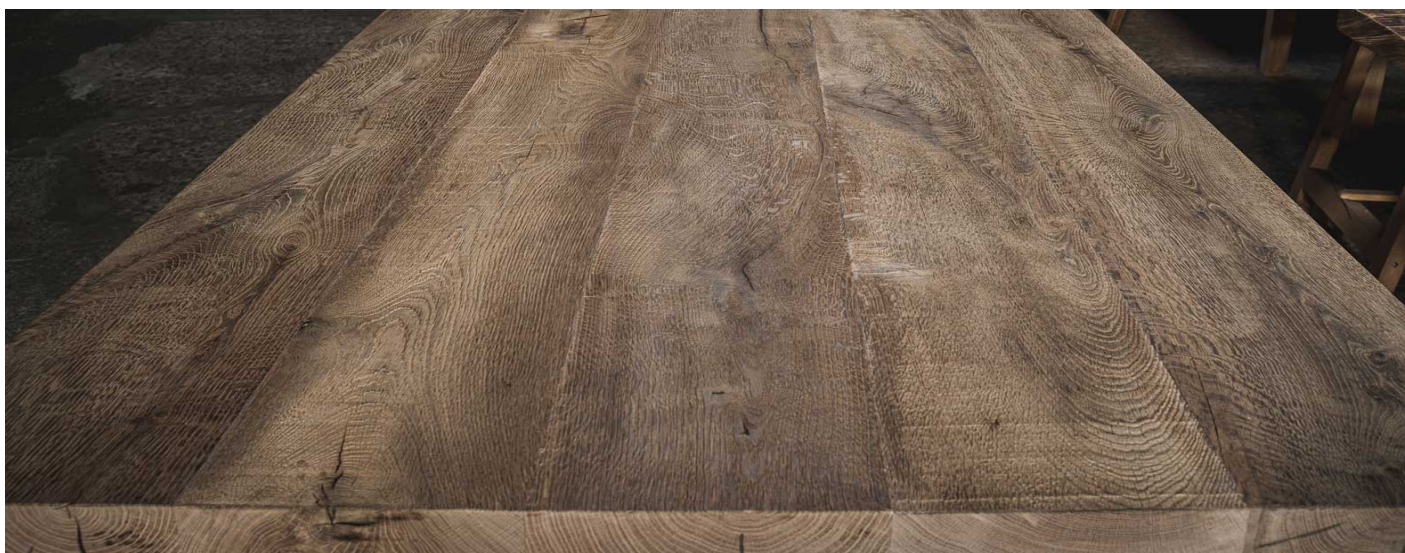
Frank Pouwer
HISTORISCHE BOUWMATERIALEN

PARISIENNE OAK PLANKS BRUSHED

€ 375,- m2

thickness approx. 4,5 cm
2/5,5 cm also available

plank calculation example
18x220 cm, thickness 4,5 cm
 $0,18 \times 2,20 \times € 350 = € 138$



RECLAIMED PINE WAGON PLANKS BRUSHED

€ 100,- m2

SQUARE EDGE thickness approx. 4,5 cm
≥ 20 cm wide + € 25 per m2

plank calculation example
18x220 cm, thickness 4,5 cm
 $0,18 \times 2,20 \times € 100 = € 40$



Prices are incl. VAT



RECLAIMED OAK WAGON PLANKS BRUSHED

€ 195,- m2

REBATED

thickness approx. 4 cm

plank calculation example

18x220 cm, thickness 4 cm

$0,18 \times 2,20 \times € 195 = € 77$



BOURGOGNE OAK PLANKS BRUSHED

€ 225,- m2

thickness approx. 4 cm

3/6/7 cm also available

calculation example plank

18x220 cm, 4 cm thickness

$0,18 \times 2,20 \times € 225 = € 89$

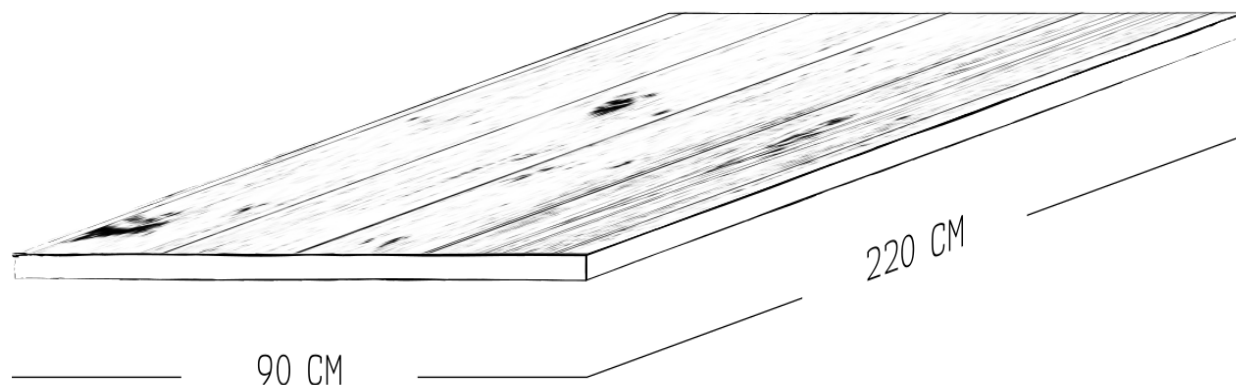


Prices are incl. VAT



Frank Pouwer
HISTORISCHE BOUWMATERIALEN

WOOD FOR TABLETOPS 90X220CM



| | |
|-----------------------------------|---------|
| RECLAIMED PINE WAGON PLANKS | € 200,- |
| RECLAIMED PLANKS oak and hardwood | € 248,- |
| REIMS OAK PLANKS | € 250,- |
| RECLAIMED OAK RAILWAY SLEEPERS | € 287,- |
| RECLAIMED HARDWOOD WAGON PLANKS | € 295,- |
| RECLAIMED OAK WAGON PLANKS | € 375,- |
| OAK WOOD SLABS AIR DRIED | € 375,- |
| RECLAIMED OAK BARNWOOD | € 376,- |
| RECLAIMED OAK WAGON PLANKS | € 385,- |
| RECLAIMED HARDWOOD WAGON PLANKS | € 385,- |
| RECLAIMED OAK WAGON PLANKS | € 385,- |
| FRENCH OAK PLANKS | € 416,- |
| BOURGOGNE OAK PLANKS | € 445,- |
| RECLAIMED OAK WAGON PLANKS | € 465,- |
| OAK WOOD SLABS AIR DRIED | € 465,- |
| RECLAIMED OAK BARNWOOD | € 475,- |
| PARISIENNE OAK PLANKS | € 695,- |

WOOD FLOORING, CLADDING & PANELING

prices are incl. vat

Our terms of service
applies to all offers and quotes
www.frankpouwer.nl



Frank Pouwer
HISTORISCHE BOUWMATERIALEN

RECLAIMED PINE CEILING PANELING

from € 25,- m2

thickness approx. 2 cm

plank calculation example
18x220 cm
 $0,18 \times 2,20 \times € 25 = € 10$



BOURGOGNE OAK BOARDS BRUSHED

€ 135,- m2

thickness approx. 2,5 cm

plank calculation example
18x220 cm
 $0,18 \times 2,20 \times € 125 = € 50$



Prices are incl. VAT



PINE CLADDING BOARDS PACKAGE PURCHASE

€ 35,- m2

thickness ca. 2,7 cm, mixed widths
350 - 450 cm length + € 6 per m2
> 450 cm length + € 18 per m2

price calculation example
 $50 \text{ m}^2 \times € 30 = € 1500$



FRENCH OAK BOARDS PLANED/FLOORING

€ 85,- m2

TONGUED AND GROOVED
thickness approx. 2 cm

plank calculation example
18x220 cm
 $0,18 \times 2,20 \times € 78 = € 31$



Prices are incl. VAT



Frank Pouwer
HISTORISCHE BOUWMATERIALEN

BOURGOGNE OAK BOARDS BRUSHED

€ 90,- m2

thickness approx. 1,5 cm

plank calculation example
18x220 cm
 $0,18 \times 2,20 \times 75 = € 30$



REIMS OAK BOARDS BRUSHED

€ 175,- m2

thickness approx. 2,5 cm

plank calculation example
18x220 cm
 $0,18 \times 2,20 \times € 125 = € 50$



Prices are incl. VAT



Frank Pouwer
HISTORISCHE BOUWMATERIALEN

RECLAIMED LARCH FLOORING

€ 75,- m2

TONGUED AND GROOVED
thickness approx. 2 cm

plank calculation example
18x220 cm
 $0,18 \times 2,20 \times € 75 = € 30$



RECLAIMED PINE BOARDS PLANED

from € 35,- m2

TONGUED AND GROOVED
thickness approx. 2 cm

plank calculation example 18x220 cm
 $0,18 \times 2,20 \times € 35 = € 14$



Prices are incl. VAT



Frank Pouwer
HISTORISCHE BOUWMATERIALEN

RECLAIMED HARDWOOD WAGON BOARDS BRUSHED € 125,- m2

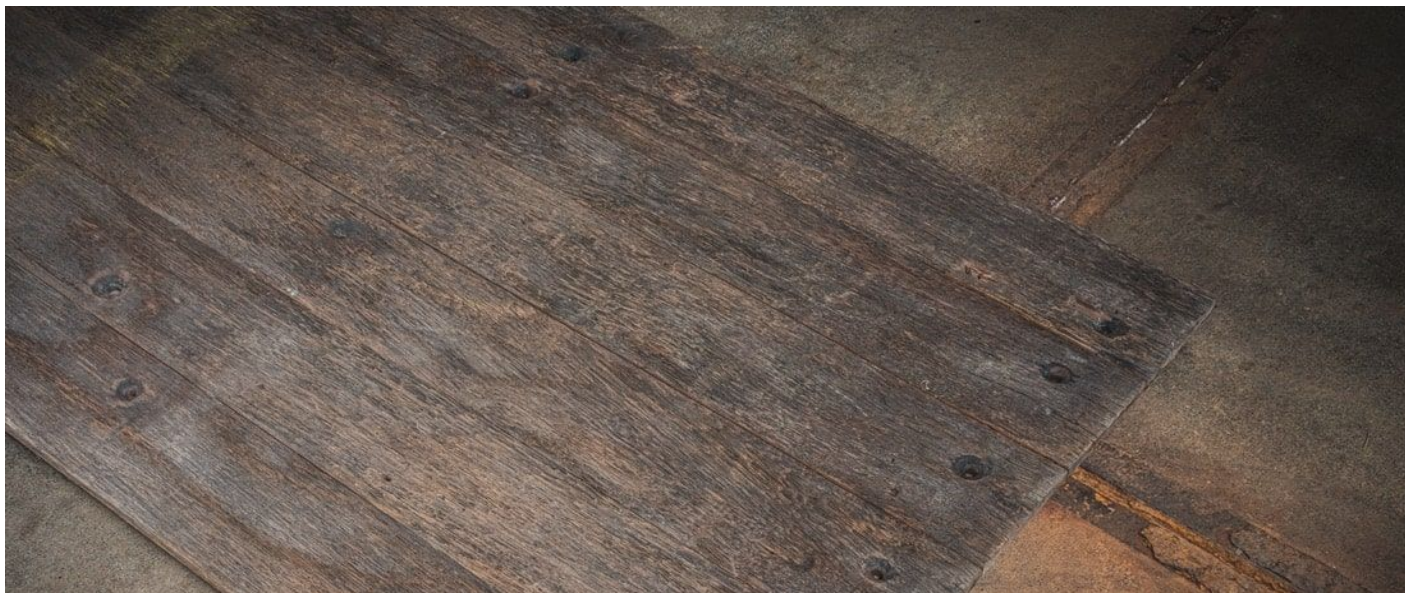
UPPERSIDES

thickness approx. 2 cm

plank calculation example

18x220 cm

$0,18 \times 2,20 \times € 115 = € 46$



RECLAIMED HARDWOOD WAGON BOARDS BRUSHED € 100,- m2

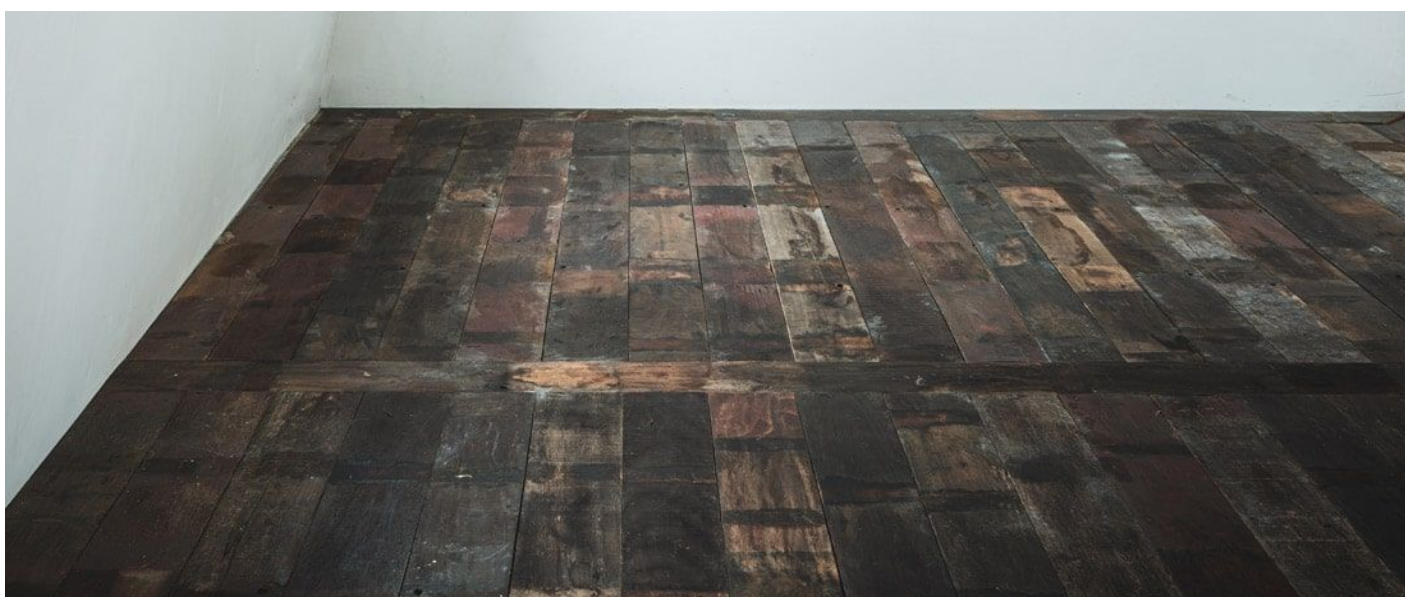
UNDERSIDES

thickness approx. 2 cm

plank calculation example

18x220 cm

$0,18 \times 2,20 \times € 85 = € 34$



Prices are incl. VAT



PARISIENNE OAK BOARDS BRUSHED

€ 200,- m²

TONGUED AND GROOVED
thickness approx. 2 cm

plank calculation example
18x220 cm
 $0,18 \times 2,20 \times € 175 = € 69$



RECLAIMED OAK WAGON BOARDS PLANED

€ 190,- m²

TONGUED AND GROOVED
thickness approx. 1,5 cm

plank calculation example
18x220 cm
 $0,18 \times 2,20 \times € 135 = € 53$



Prices are incl. VAT



RECLAIMED PINE BARNWOOD CLADDING

€ 90,- m2

TONGUED AND GROOVED
thickness approx. 2 cm

plank calculation example 18x220 cm
 $0,18 \times 2,20 \times 90 = € 36$



RECLAIMED PINE BARNWOOD CLADDING

from € 65,- m2

thickness approx. 2,5 cm

plank calculation example
18x220 cm
 $0,18 \times 2,20 \times € 45 = € 18$



Prices are incl. VAT



RECLAIMED OAK WAGON BOARDS BRUSHED

€ 165,- m2

UNDERSIDES

thickness approx. 1,5 cm

plank calculation example

18x220 cm

$0,18 \times 2,20 \times € 150 = € 59$



RECLAIMED OAK WAGON BOARDS BRUSHED

€ 235,- m2

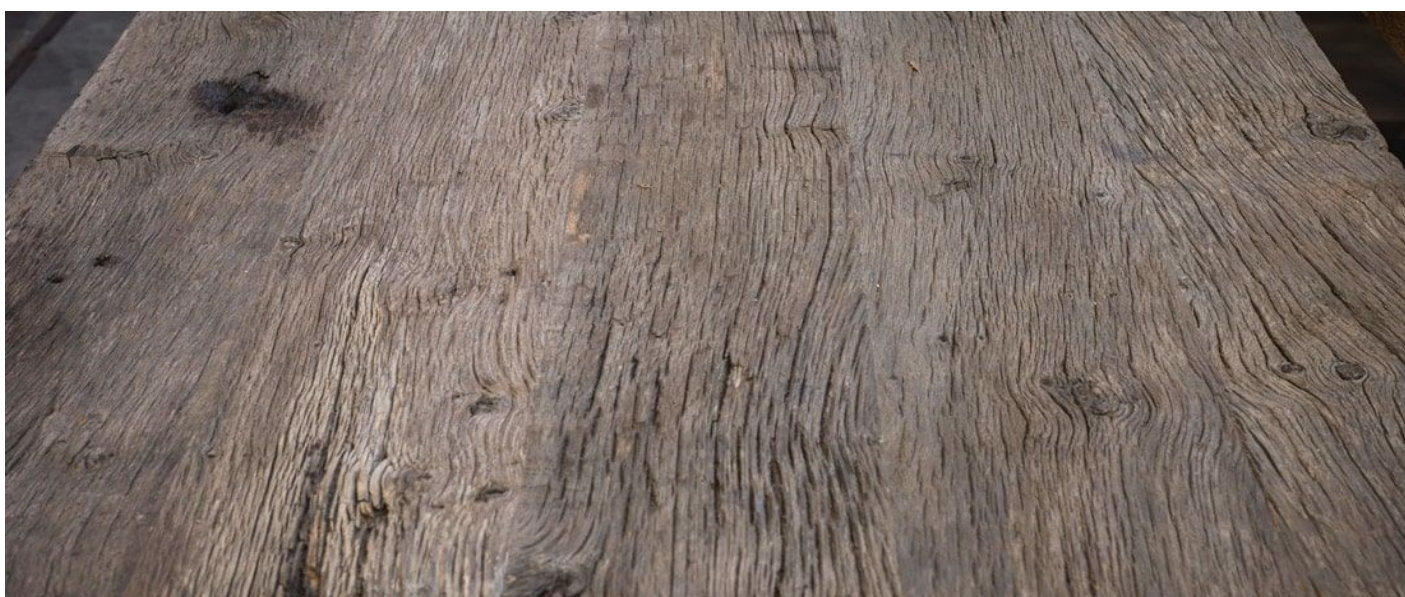
UPPERSIDES

thickness approx. 2 cm

plank calculation example

18x220 cm

$0,18 \times 2,20 \times € 235 = € 93$



Prices are incl. VAT



Frank Pouwer
HISTORISCHE BOUWMATERIALEN

RECLAIMED PINE WAGON BOARDS BRUSHED

€ 75,- m2

UPPERSIDES

thickness approx. 2 cm

plank calculation example

18x220 cm

$0,18 \times 2,20 \times € 75 = € 30$



RECLAIMED PINE WAGON BOARDS BRUSHED

€ 50,- m2

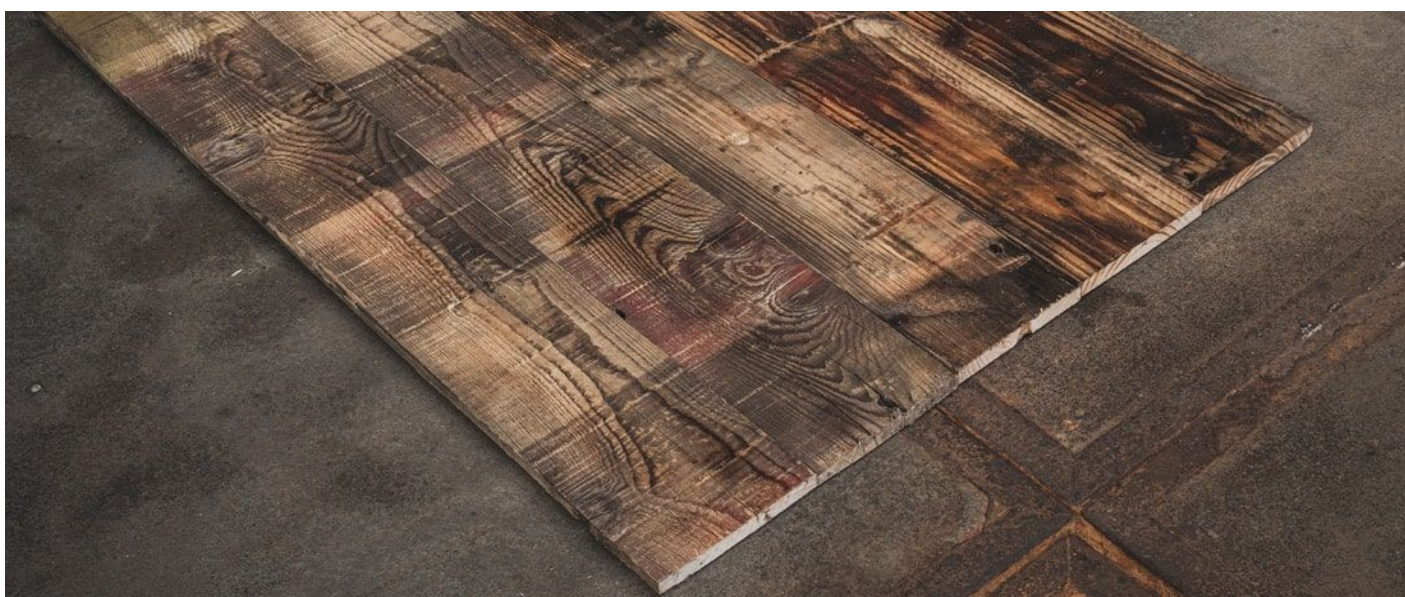
UNDERSIDES

thickness approx. 2 cm

plank calculation example

18x220 cm

$0,18 \times 2,20 \times € 50 = € 20$



Prices are incl. VAT



Frank Pouwer
HISTORISCHE BOUWMATERIALEN

RECLAIMED OREGON PINE FLOORINGPLANED

thickness approx. 2,5 cm
approx. 25,5 cm wide

prices and stock availability on demand

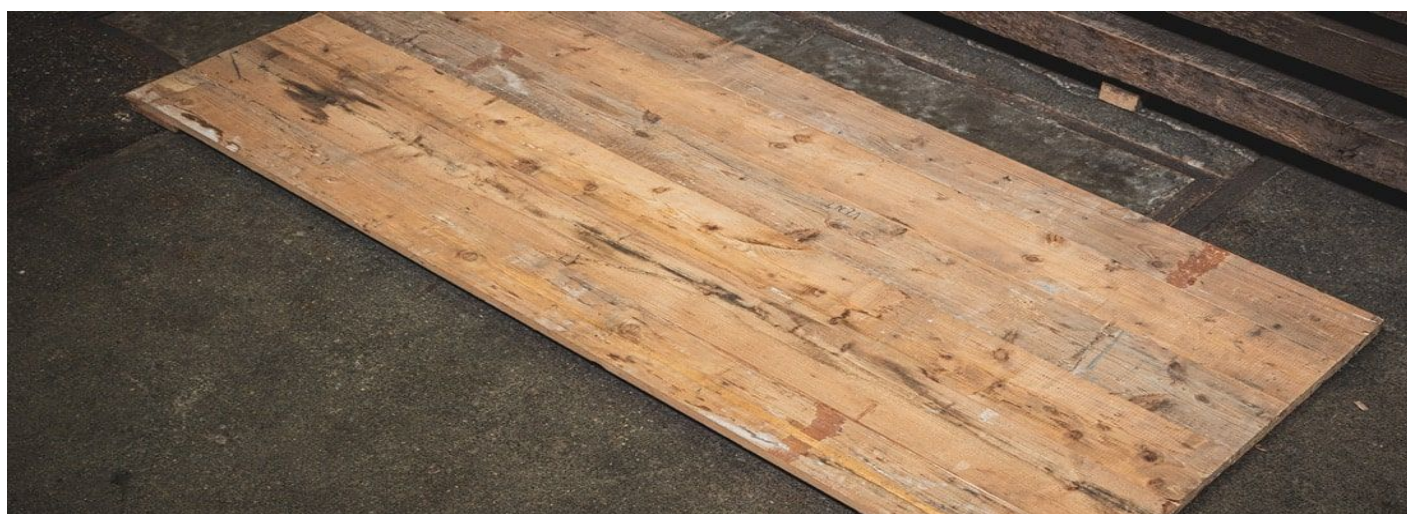


RECLAIMED PINE BOARDS

€ 42,- m2

CUT FROM RECLAIMED BEAMS
thickness approx. 2 cm

plank calculation example
18x220 cm
 $0,18 \times 2,20 \times € 42 = € 17$

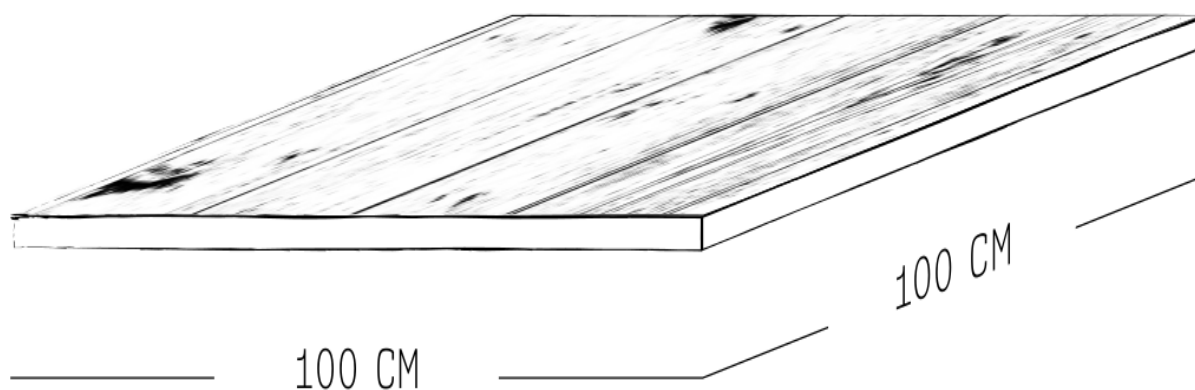


Prices are incl. VAT



Frank Pouwer
HISTORISCHE BOUWMATERIALEN

PRICES PER SQUARE METER 100X100 CM



| | |
|---------------------------------|-------------|
| RECLAIMED PINE CEILING | from € 25,- |
| PINE CLADDING BOARDS | € 35,- |
| RECLAIMED PINE BOARDS | from € 35,- |
| RECLAIMED PINE BOARDS | € 42,- |
| RECLAIMED PINE WAGON BOARDS | € 50,- |
| RECLAIMED PINE BARNWOOD | from € 65,- |
| RECLAIMED LARCH FLOORING | € 75,- |
| RECLAIMED PINE WAGON BOARDS | € 75,- |
| FRENCH OAK BOARDS | € 85,- |
| BOURGOGNE OAK BOARDS | € 90,- |
| RECLAIMED PINE BARNWOOD | € 90,- |
| RECLAIMED HARDWOOD WAGON BOARDS | € 100,- |
| RECLAIMED HARDWOOD WAGON BOARDS | € 125,- |
| BOURGOGNE OAK BOARDS | € 135,- |
| RECLAIMED OAK WAGON BOARDS | € 165,- |
| REIMS OAK BOARDS | € 175,- |
| RECLAIMED OAK WAGON BOARDS | € 190,- |
| PARISIENNE OAK BOARDS | € 200,- |
| RECLAIMED OAK WAGON BOARDS | € 235,- |